



Bulletin 1:

European Ski Orienteering Championships (ESOC)
Junior World Ski Orienteering Championships (JWSOC)
European Youth Ski Orienteering Championships (EYSOC)
World Cup 2015/16 Round 3

1 Organizers

Austrian Orienteering Federation with local organizers

Event director: Hans Georg Gratzner
Competition secretary: Nathalie Huber
IOF Event Advisor: Hansruedi Häny
National Controller: Wolf Eberle

Address: Hans Georg Gratzner
Arzlerstraße 48a
A-6020 Innsbruck
Tel: +43 664 5634001

Website: www.skio2016.at
Mail: office@skio2016.at

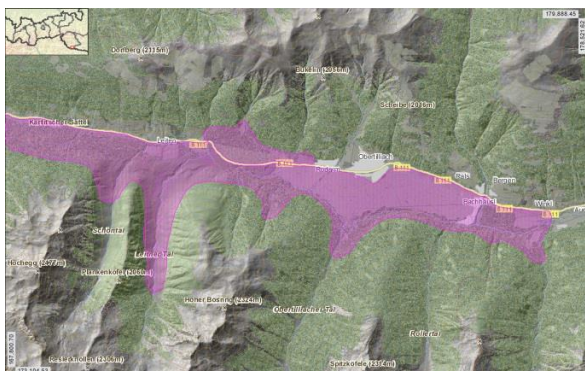
2 Venue

The Competition Center is located at the biathlon arena in Obertilliach. (GPS 46°42'33"N 12°35'27"E).

The distance from Munich International Airport to Obertilliach is approximately 300km by car. The nearest railway station is in Lienz. (40 km by car)

3 Embargoed Area

The Lesachtal valley between Kartitsch and Untertilliach between 15th August 2015 and 6th March 2016



4 Dates and types of the competition

Date	ESOC	JWSOC	EYSOC
Saturday 27 th February	Arrival	Arrival	Arrival
Sunday 28 th February	Model Event	Model Event	Model Event
Monday 29 th February	Sprint	Sprint	Sprint
Tuesday 1 st March	Sprint Relay		
Wednesday 2 nd March	Long	Long	Long
Thursday 3 rd March	Day off	Day off	Day off
Friday 4 th March	Middle (Massstart)	Middle (Massstart)	Middle (Massstart)
Saturday 5 th March	Relay	Relay	Relay
Sunday 6 th March	Departure	Departure	Departure

5 Classes and Participation restrictions

ESOC: In the individual competitions Federations may enter a maximum of 6 competitors in each class. Federations may enter 2 teams in the Relay and 3 teams in the Sprint Relay.

World Cup: In the individual competitions Federations may enter a maximum of 6 competitors in each class. Federations may enter 2 teams in the Relay and 3 teams in the Sprint Relay.

JWSOC: In the individual competitions Federations may enter a maximum of 6 competitors in each class. Federations may enter 2 teams in the Relay.

EYSOC: In the individual competitions Federations may enter a maximum of 6 competitors in each class. Federations may enter 2 teams in the Relay.

6 Terrain Type / Opportunities for Training

Typical alpine valley with forest, marches and open fields. The terrain is situated between 1250m and 1400m.

There are similar terrains with Ski Orienteering Maps in Kals am Großglockner and Wipptal valley. For more information please contact

office@kompass-innsbruck.at

7 Accommodation

A lot of different types of accommodations are offered by the local tourist board.

www.obertilliach.at

More Information will come in Bulletin 2